

BALDOR® • RELIANCE 

Product Information Packet

M1521T

1.5/.67HP, 1725/1140RPM, 3PH, 60HZ, 182T

Part Detail							
Revision:	Y	Status:	PRD/A	Change #:		Proprietary:	No
Type:	AC	Elec. Spec:	36WG0450	CD Diagram:	CD0013	Mfg Plant:	
Mech. Spec:	36A001	Layout:	36LYA001	Poles:	04/06	Created Date:	
Base:	RG	Eff. Date:	01-23-2020	Leads:	6#16		

Specs			
Catalog Number:	M1521T	Heater Indicator:	No Heater
Enclosure:	TEFC	Insulation Class:	F
Frame:	182T	Inverter Code:	Not Inverter
Frame Material:	Steel	KVA Code:	H
Output @ Frequency:	1.500 HP @ 60 HZ	Lifting Lugs:	No Lifting Lugs
	.670 HP @ 60 HZ	Locked Bearing Indicator:	No Locked Bearing
Synchronous Speed @ Frequency:	1200 RPM @ 60 HZ	Motor Lead Quantity/Wire Size:	6 @ 16 AWG
Voltage @ Frequency:	208.0 V @ 60 HZ	Motor Lead Exit:	Ko Box
	230.0 V @ 60 HZ	Motor Lead Termination:	Flying Leads
XP Class and Group:	None	Motor Type:	3623M
XP Division:	Not Applicable	Mounting Arrangement:	F1
Agency Approvals:	UR	Product Family:	General Purpose
	CSA	Pulley End Bearing Type:	Ball
Auxillary Box:	No Auxillary Box	Pulley Face Code:	Standard
Auxillary Box Lead Termination:	None	Pulley Shaft Indicator:	Standard
Base Indicator:	Rigid	Rodent Screen:	None
Bearing Grease Type:	Polyrex EM (-20F +300F)	Shaft Extension Location:	Pulley End
Blower:	None	Shaft Ground Indicator:	No Shaft Grounding

Current @ Voltage:	2.800 A @ 230.0 V	Shaft Rotation:	Reversible
	4.400 A @ 208.0 V	Shaft Slinger Indicator:	No Slinger
Design Code:	-	Speed Code:	2S-2W-VT
Drip Cover:	No Drip Cover	Motor Standards:	NEMA
Duty Rating:	CONT	Starting Method:	Direct on line
Electrically Isolated Bearing:	Not Electrically Isolated	Thermal Device - Bearing:	None
Feedback Device:	NO FEEDBACK	Thermal Device - Winding:	None
Front Face Code:	Standard	Vibration Sensor Indicator:	No Vibration Sensor
Front Shaft Indicator:	None	Winding Thermal 1:	None
		Winding Thermal 2:	None

Nameplate NP1256L										
CAT.NO.	M1521T									
SPEC.	36A01-450									
HP	1.5/.67									
VOLTS	208-230									
AMP	4.4/2.8									
RPM	1725/1140									
FRAME	182T				HZ	60			PH	3
SER.F.	1.15		CODE	H	DES	-		CLASS	F	
NEMA-NOM-EFF			PF							
RATING	40C AMB-CONT									
CC									USABLE AT 208V	
DE	6206				ODE	6205				
ENCL	TEFC		SN							

Parts List		
Part Number	Description	Quantity
SA033870	SA 36A01-450	1.000 EA
RA029898	RA 36A01-450	1.000 EA
36CB3004	36 CB CASTING W/1.09 DIA LEAD HOLE @ 6:0	1.000 EA
36GS1000SP	GASKET-CONDUIT BOX, .06 THICK #SV-330 LE	1.000 EA
51XB1016A08	10-16X 1/2HXWSSLD SERTYB	2.000 EA
11XW1032G06	10-32 X .38, TAPTITE II, HEX WSHR SLTD U	1.000 EA
HW3001B01	BRASS CUP WASHER, FOR #10 SCREW	1.000 EA
36EP3104A01	FREP MACH ASSEMBLY FOR ROUTING	1.000 EA
HW4500A01	1641B(ALEMITE)400 UNIV, GREASE FITT	1.000 EA
HW5100A05	WVY WSHR F/205 & 304 BRGS	1.000 EA
36EP3100A01SP	PUEP ASSEMBLY FOR ROUTING PURPOSES	1.000 EA
HW4500A01	1641B(ALEMITE)400 UNIV, GREASE FITT	1.000 EA
XY2520A12	1/4-20 HEX NUT, DIRECTIONAL SERRATIONS	4.000 EA
51XB1214A16	12-14X1.00 HXWSSLD SERTYB	1.000 EA
36FH4009A102	IEC FH GREASER PRIMED	1.000 EA
51XW1032A06	10-32 X .38, TAPTITE II, HEX WSHR SLTD S	3.000 EA
36CB4516	36 LIPPED CB LID - GALVANNEAL	1.000 EA
37GS1001SP	GASKET, CONDUIT BOX LID, .06 THICK LEXID	1.000 EA
51XW0832A07	8-32 X .44, TAPTITE II, HEX WSHR SLTD SE	4.000 EA
HW2501E16	KEY, 1/4 SQ X 1.750	1.000 EA
HA7000A02	KEY RETAINER RING, 1 1/8 DIA, 1 3/8 DIA	1.000 EA
85XU0407S04	4X1/4 U DRIVE PIN STAINLESS	2.000 EA
MJ1000A02	GREASE, MOBIL POLYREX EM - 124047	0.050 LB
36FN3000A01SP	EXFN, PLASTIC, 7.00 OD, .912 ID	1.000 EA

Parts List (continued)		
Part Number	Description	Quantity
MG1000G27	MED CHARCOAL METALLIC GREY 400-0096	0.022 GA
HA3101A23	THRUBOLT 1/4-20 X 9.625 DEMBY	4.000 EA
LB1119N	WARNING LABEL	1.000 EA
LC0013	CONNECTION LABEL	1.000 EA
NP1256L	ALUM UL CSA CC INDUSTRIAL MOTOR A60	1.000 EA
36PA1001	PKG GRP, PRINT PK1017A06	1.000 EA
MN416A01	TAG-INSTAL-MAINT no wire (1200/bx) 3/19	1.000 EA

Accessories		
Part Number	Description	Multiplier
36-3301	C FACE KIT	A8
36EP1304A62SP	FLANGE MTD ENDPLATE 182-4TD -ENCL (LESS	A8

AC Induction Motor Performance Data

Record # 61294 - Typical performance - not guaranteed values

Winding: 36WG0450-R002	Type: 3623M	Enclosure: TEFC
-------------------------------	--------------------	------------------------

Nameplate Data				230 V, 60 Hz: High Speed Connection	
Rated Output (HP)	1.5/.67			Full Load Torque	4.6 LB-FT
Volts	208-230			Start Configuration	direct on line
Full Load Amps	4.4/2.8			Breakdown Torque	16 LB-FT
R.P.M.	1725/1140			Pull-up Torque	9 LB-FT
Hz	60	Phase	3	Locked-rotor Torque	14 LB-FT
NEMA Design Code	-	KVA Code	H	Starting Current	24.5 A
Service Factor (S.F.)	1.15			No-load Current	2 A
NEMA Nom. Eff.	0	Power Factor	0	Line-line Res. @ 25°C	5.04 Ω
Rating - Duty	40C AMB-CONT			Temp. Rise @ Rated Load	28°C
S.F. Amps				Temp. Rise @ S.F. Load	35°C
				Locked-rotor Power Factor	73.7
				Rotor inertia	0.216 LB-FT ²

Load Characteristics 230 V, 60 Hz, 1.5 HP

% of Rated Load	25	50	75	100	125	150	S.F.
Power Factor	50	72	82	87	88	89	88
Efficiency	67	76.8	79	78.7	76.9	73.9	77.6
Speed	1779	1760	1739	1715	1687	1653	1698
Line amperes	2.2	2.6	3.3	4.1	5.1	6.2	4.7

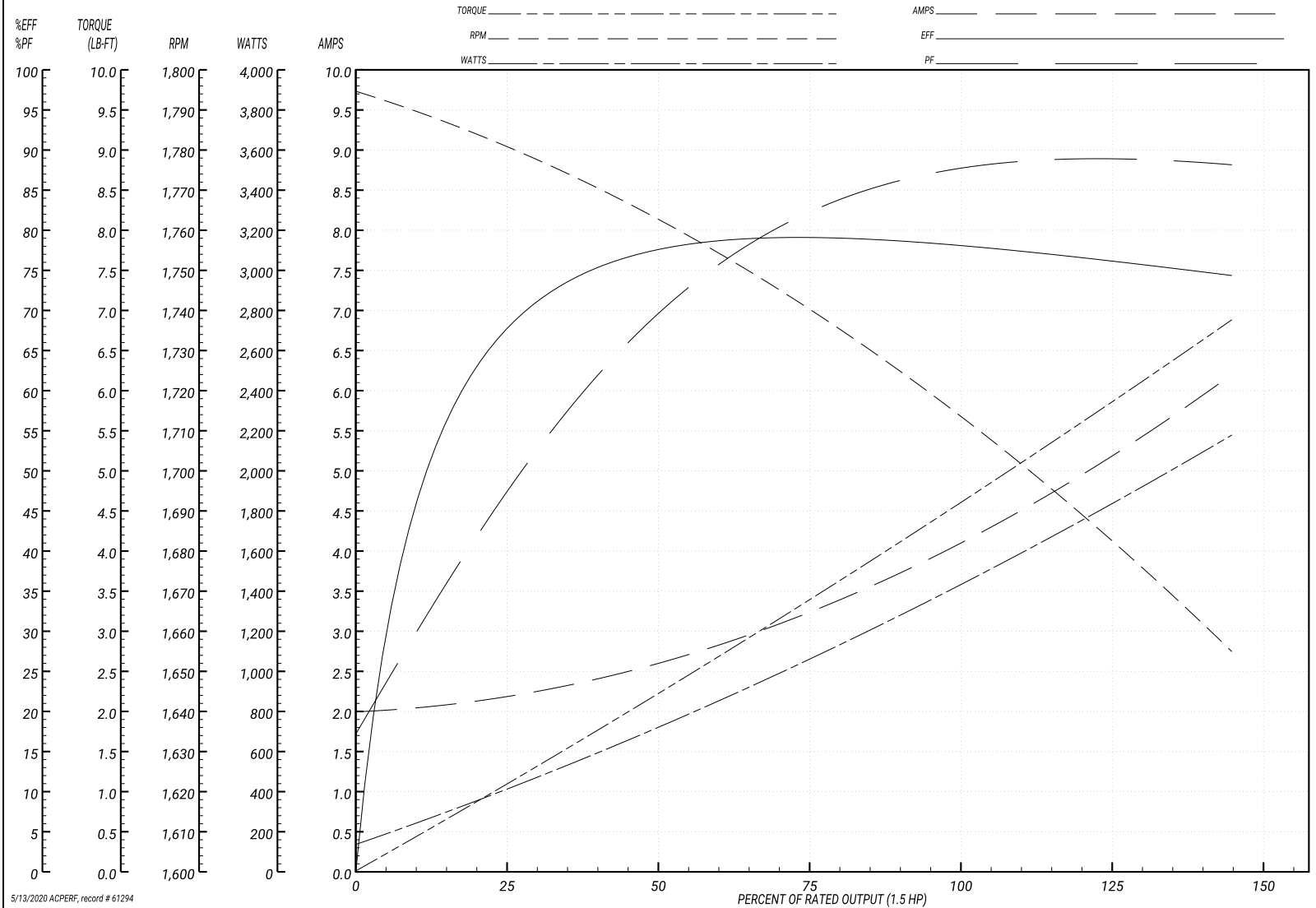
Performance Graph at 230V, 60Hz, 1.5HP Typical performance - Not guaranteed values

ABB Motors and Mechanical Inc.

WINDING # 36WG0450

Typical performance - not guaranteed values.

1.5 HP 3 PH 60 HZ 1715 RPM 230 V 3623M
 TORQUES(LB-FT): PO=16 PU=9 LR=14 LRA=24.5



5/13/2020 ACPERF, record # 61294

AC Induction Motor Performance Data

Record # 61295 - Typical performance - not guaranteed values

Winding: 36WG0450-R002	Type: 3623M	Enclosure: TEFC
-------------------------------	--------------------	------------------------

Nameplate Data				230 V, 60 Hz: Low Speed Connection	
Rated Output (HP)	1.5/.67			Full Load Torque	3 LB-FT
Volts	208-230			Start Configuration	direct on line
Full Load Amps	4.4/2.8			Breakdown Torque	10 LB-FT
R.P.M.	1725/1140			Pull-up Torque	5.5 LB-FT
Hz	60	Phase	3	Locked-rotor Torque	7 LB-FT
NEMA Design Code	-	KVA Code	H	Starting Current	13 A
Service Factor (S.F.)	1.15			No-load Current	2.2 A
NEMA Nom. Eff.	0	Power Factor	0	Line-line Res. @ 25°C	8.76 Ω
Rating - Duty	40C AMB-CONT			Temp. Rise @ Rated Load	26°C
S.F. Amps				Temp. Rise @ S.F. Load	29°C
				Locked-rotor Power Factor	72.7
				Rotor inertia	0.216 LB-FT ²

Load Characteristics 230 V, 60 Hz, 0.67 HP

% of Rated Load	25	50	75	100	125	150	S.F.
Power Factor	31	45	55	64	71	76	68
Efficiency	46.1	61.5	68.4	71.5	72.7	72.7	72.2
Speed	1190	1181	1173	1163	1152	1140	1156
Line amperes	2.2	2.3	2.5	2.7	3	3.3	2.88

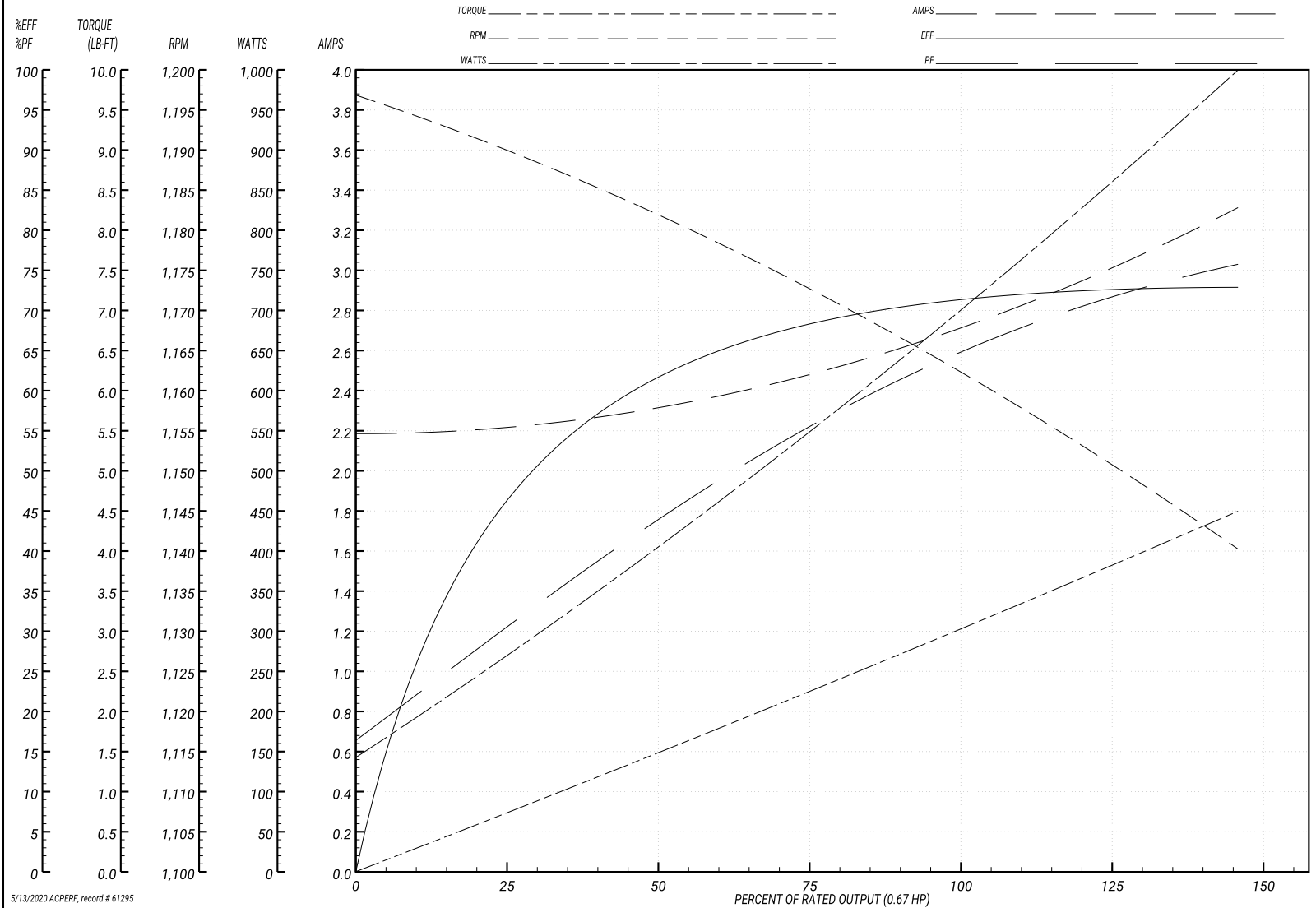
Performance Graph at 230V, 60Hz, 0.67HP Typical performance - Not guaranteed values

ABB Motors and Mechanical Inc.

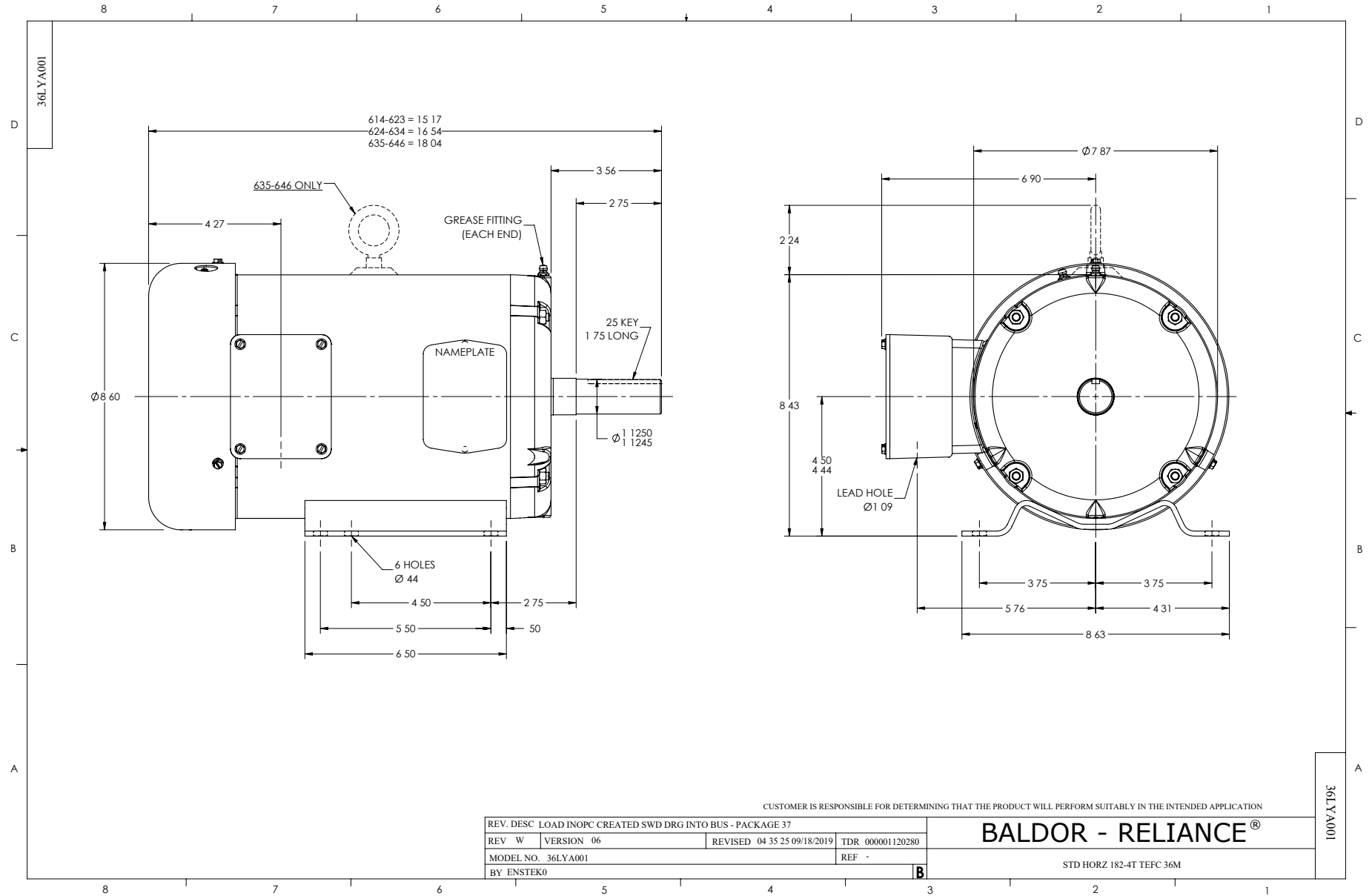
WINDING # 36WG0450

Typical performance - not guaranteed values.

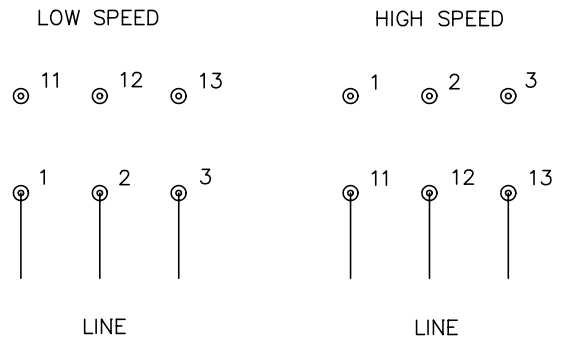
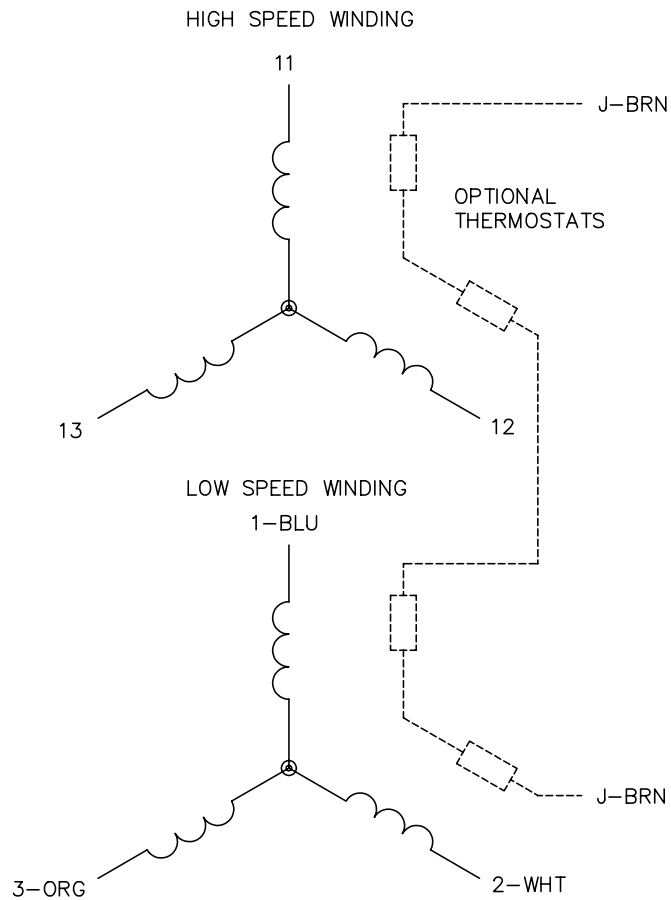
0.67 HP 3 PH 60 HZ 1163 RPM 230 V 3623M
 TORQUES(LB-FT): PO=10 PU=5.5 LR=7 LRA=13



5/13/2020 ACPERF, record # 61295



CD0013



NOTES:

1. INTERCHANGE ANY TWO LINE LEADS TO REVERSE ROTATION.
2. OPTIONAL THERMOSTATS ARE PROVIDED WHEN SPECIFIED.
3. ACTUAL NUMBER OF INTERNAL PARALLEL CIRCUITS MAY VARY.
4. LEAD COLORS ARE OPTIONAL. LEADS MUST ALWAYS BE NUMBERED AS SHOWN.

REV. DESC: REVISE TO SHOW OPTIONAL COLORS			
REV. LTR: D	BY: JLP	REVISED: 01/22/99 8:50	TDR: 0171435
Ω10003		FILE: AAA00005143	MDL: -
		MTL: -	

BALDOR ELECTRIC Co.

3PH, SV, 6 LEADS, 2-SPEED 2-WINDING

CD0013